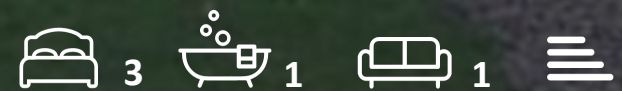




## 12 Roysdean Manor

5 Derby Road, Bournemouth, BH1 3PT

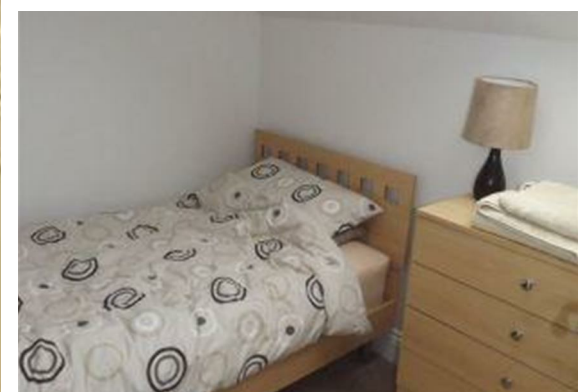
**£1,700 Per month**



## 12 Roysdean Manor

5 Derby Road, Bournemouth, BH1 3PT

Well-appointed 3-bed mews cottage offered fully furnished. One double bedroom, one twin room, and one single small room with a family bathroom in the 1st floor. Downstairs a good flowing area open plan kitchen-dinner and lounge fully equipped. Little porch and stables-like front door to a magnificent communal secluded garden area with benches for summer al fresco dining. Available for sharers with a £200 supplement, so £1900pcm. Bills are excluded, but internet wifi access is provided.





## Floor Plan



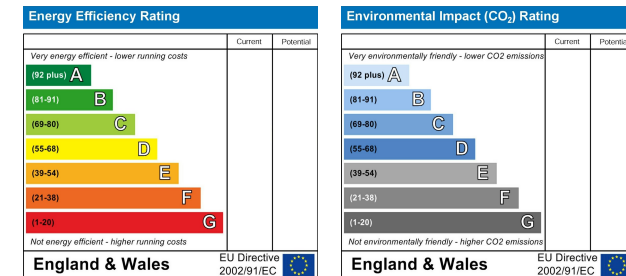
## Viewing

Please contact our Fully Managed Properties Office on if you wish to arrange a viewing appointment for this property or require further information.

## Area Map



## Energy Efficiency Graph



These particulars, whilst believed to be accurate are set out as a general outline only for guidance and do not constitute any part of an offer or contract. Intending purchasers should not rely on them as statements of representation of fact, but must satisfy themselves by inspection or otherwise as to their accuracy. No person in this firm's employment has the authority to make or give any representation or warranty in respect of the property.