



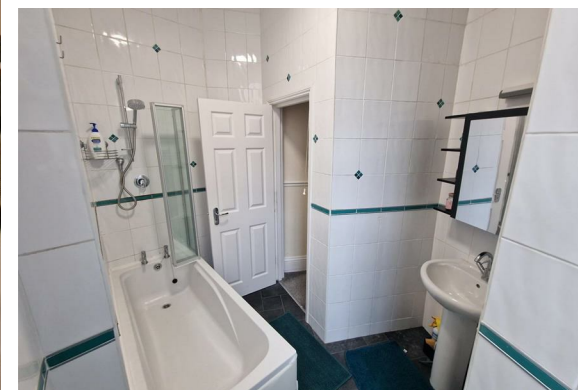
188b Old Christchurch Road
, Bournemouth, BH1 1NU

£1,350 Per month

188b Old Christchurch Road

, Bournemouth, BH1 1NU

Modernised two-bedroom flat to let in Bournemouth Town centre near Lansdowne Uni Campus and main commercial area. This flat was recently redecorated and offers two good size bedrooms with open plan kitchen come diner and lounge. One rather large family bathroom with shower over bath and storage spaces compliments this 2bed unit set on a classic Victorian character building with a unique bay window view! Available soon, please register your interest.



Floor Plan



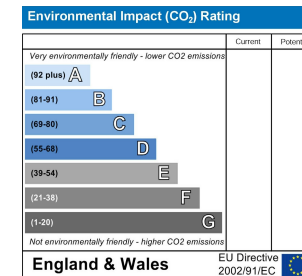
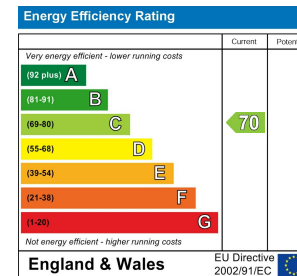
Viewing

Please contact our Fully Managed Properties Office on if you wish to arrange a viewing appointment for this property or require further information.

Area Map



Energy Efficiency Graph



These particulars, whilst believed to be accurate are set out as a general outline only for guidance and do not constitute any part of an offer or contract. Intending purchasers should not rely on them as statements of representation of fact, but must satisfy themselves by inspection or otherwise as to their accuracy. No person in this firm's employment has the authority to make or give any representation or warranty in respect of the property.