



Flat 6 10 Eldon Place
Westbourne, Bournemouth, BH4 9AZ

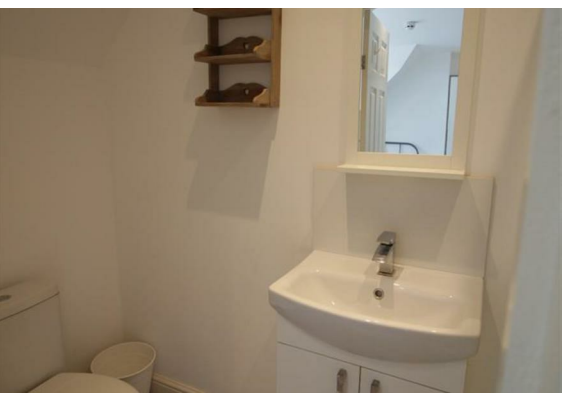
£950 Per month



Flat 6 10 Eldon Place

Westbourne, Bournemouth, BH4 9AZ

Studio flat to let in the centre of Westbourne area in Bournemouth. Offered fully furnished and with partial bills (Electricity top up cards not included). No parking. Shared coin-operated laundry facilities.



Floor Plan



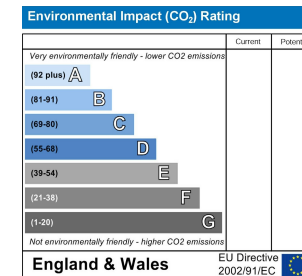
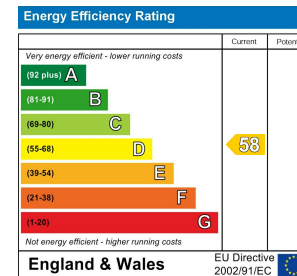
Viewing

Please contact our Leased Office on
if you wish to arrange a viewing appointment for this property or require further information.

Area Map



Energy Efficiency Graph



These particulars, whilst believed to be accurate are set out as a general outline only for guidance and do not constitute any part of an offer or contract. Intending purchasers should not rely on them as statements of representation of fact, but must satisfy themselves by inspection or otherwise as to their accuracy. No person in this firm's employment has the authority to make or give any representation or warranty in respect of the property.