



Flat 4, 15 Spencer Road  
, Bournemouth, BH1 3TE

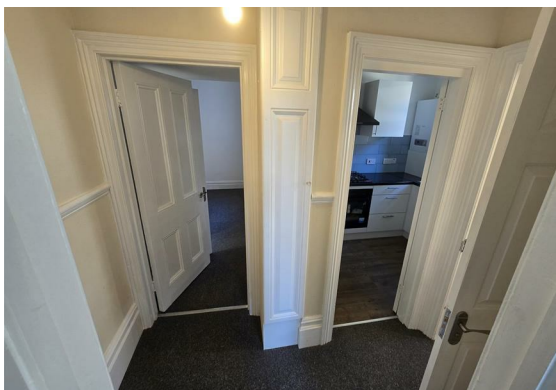
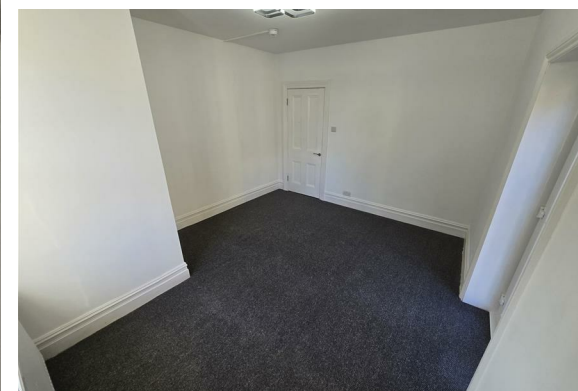
**£1,150 Per month**



## Flat 4, 15 Spencer Road

, Bournemouth, BH1 3TE

A spacious one-bed flat to let in Springbourne area, few minutes away from Bournemouth Interchange and train station. The flat has been tastefully redecorated and comes with white goods and new double glazed windows. Gas central heating and gas hob, modern LED lights and neutral deco. The bedroom has a storage area and a modern fitted bathroom with shower over head and a wash basin cabinet. A separate loo is also well decorated. Brand new carpets throughout and freshly painted overall. EPC D and Council Tax band A. Parking On the Road not subject to permit. Suitable for family or professionals. Long term agreements only.





## Floor Plan



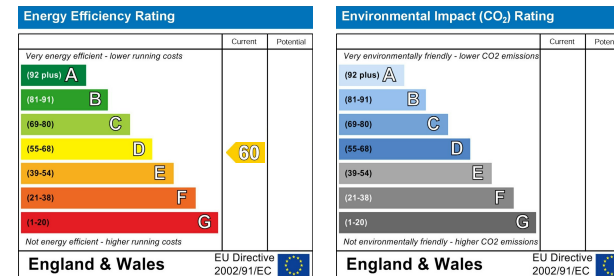
## Viewing

Please contact our Fully Managed Properties Office on if you wish to arrange a viewing appointment for this property or require further information.

## Area Map



## Energy Efficiency Graph



These particulars, whilst believed to be accurate are set out as a general outline only for guidance and do not constitute any part of an offer or contract. Intending purchasers should not rely on them as statements of representation of fact, but must satisfy themselves by inspection or otherwise as to their accuracy. No person in this firm's employment has the authority to make or give any representation or warranty in respect of the property.