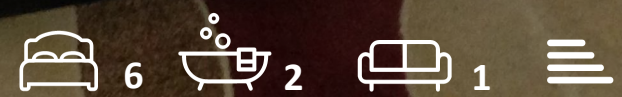




48 Chatsworth Road  
, Bournemouth, BH8 8SL

**£625 Per month**



## 48 Chatsworth Road

, Bournemouth, BH8 8SL

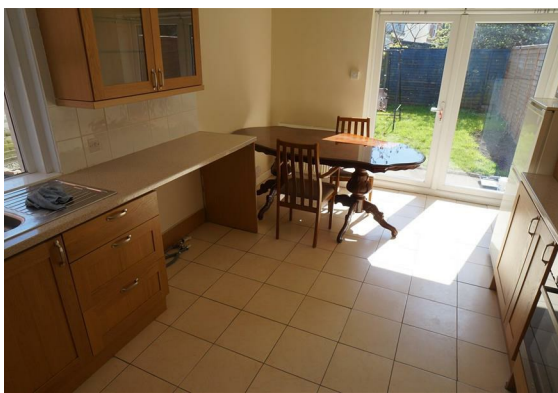
Ground floor large double room to let in Charminster area. The House offers communal garden area and front car park first come first serve.

### Key Features

- All bills included
- Fully furnished
- Internet Wifi Access
- Communal Laundry facilities
- Communal cooking area and dining space
- Two full bathrooms to share
- Back garden
- Driveway for one car park 1st come first serve. Parking on the road

EPC rate: 59 | D

BCP Council tax Band: D





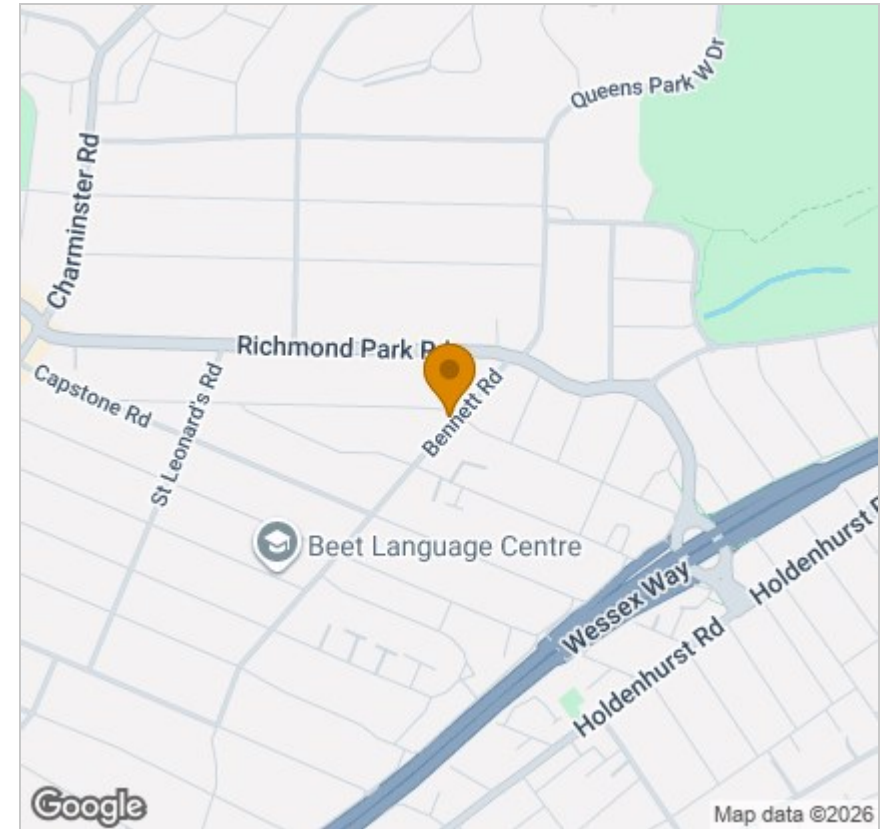
## Floor Plan



## Viewing

Please contact our HMO's Office on  
if you wish to arrange a viewing appointment for this property or require further information.

## Area Map



## Energy Efficiency Graph



These particulars, whilst believed to be accurate are set out as a general outline only for guidance and do not constitute any part of an offer or contract. Intending purchasers should not rely on them as statements of representation of fact, but must satisfy themselves by inspection or otherwise as to their accuracy. No person in this firm's employment has the authority to make or give any representation or warranty in respect of the property.