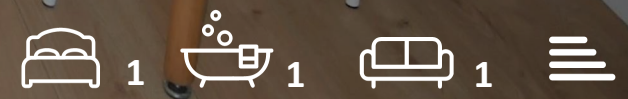




Turay Court 6 St. Swithuns Road South
Bournemouth, BH1 3RQ

£1,250 Per month



Turay Court 6 St. Swithuns Road

, Bournemouth, BH1 3RQ

Modern One Bed Ground floor garden Flat to let in a charming block of apartments located near the Lansdowne Bournemouth Uni campus and Train station.

Key Features:

Fully Furnished

Communal patio and garden

Complimentary Internet Wifi Access

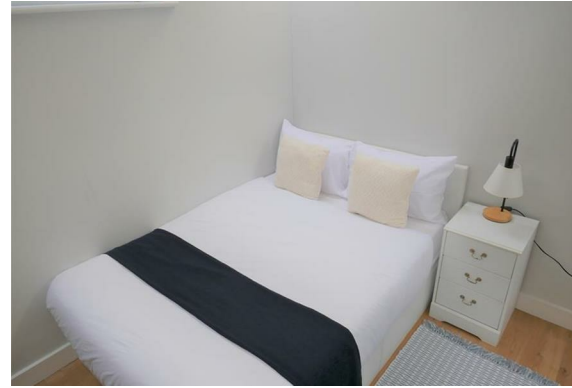
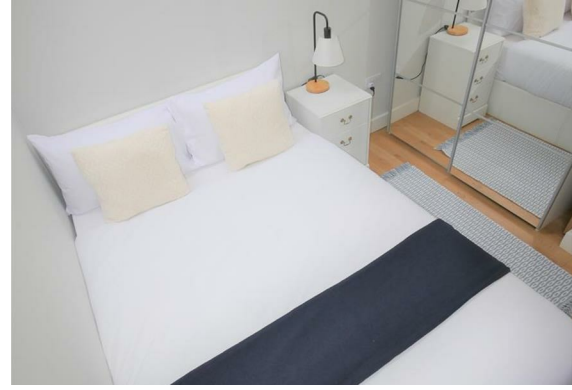
Open plan Kitchen sitting area

Good size double room

Shower room and laundry/ airing cupboard

Parking off-road (Subject to separate agreement & Availability (3 parking spots only))





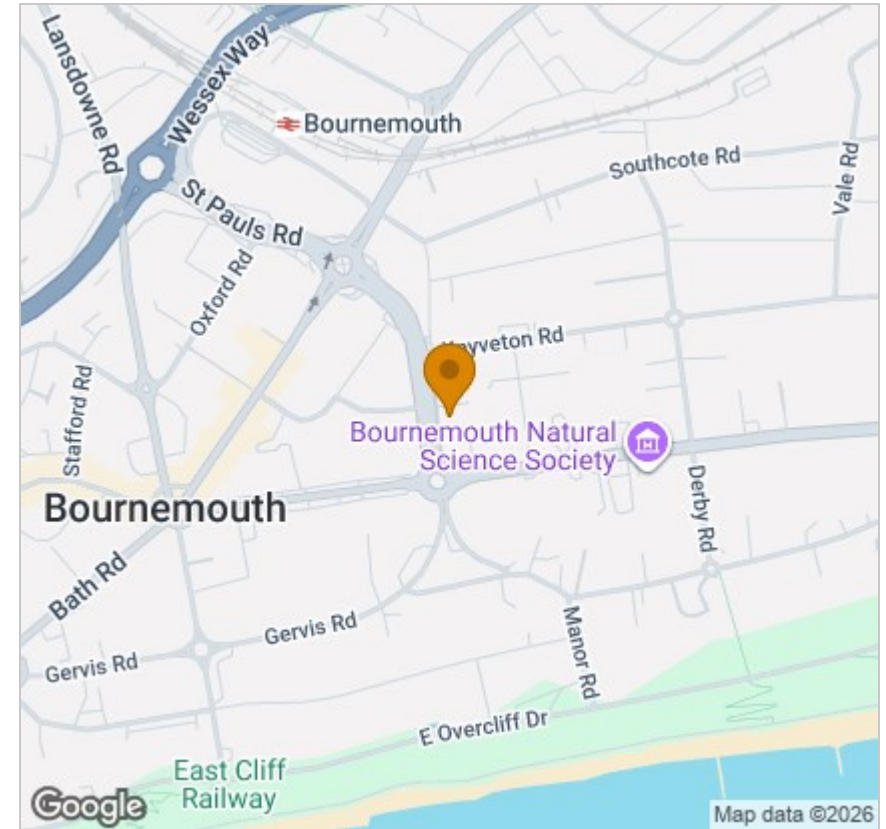
Floor Plan



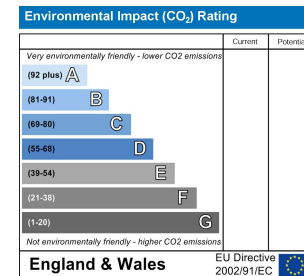
Viewing

Please contact our Fully Managed Properties Office on if you wish to arrange a viewing appointment for this property or require further information.

Area Map



Energy Efficiency Graph



These particulars, whilst believed to be accurate are set out as a general outline only for guidance and do not constitute any part of an offer or contract. Intending purchasers should not rely on them as statements of representation of fact, but must satisfy themselves by inspection or otherwise as to their accuracy. No person in this firm's employment has the authority to make or give any representation or warranty in respect of the property.